

EDGE
LED LIGHTING



Commercial UVC Sterilizer

Portable 253.7 nm Ultraviolet Disinfection
Kills Viruses, Bacteria, Fungi & More

Commercial UVC Sterilizer



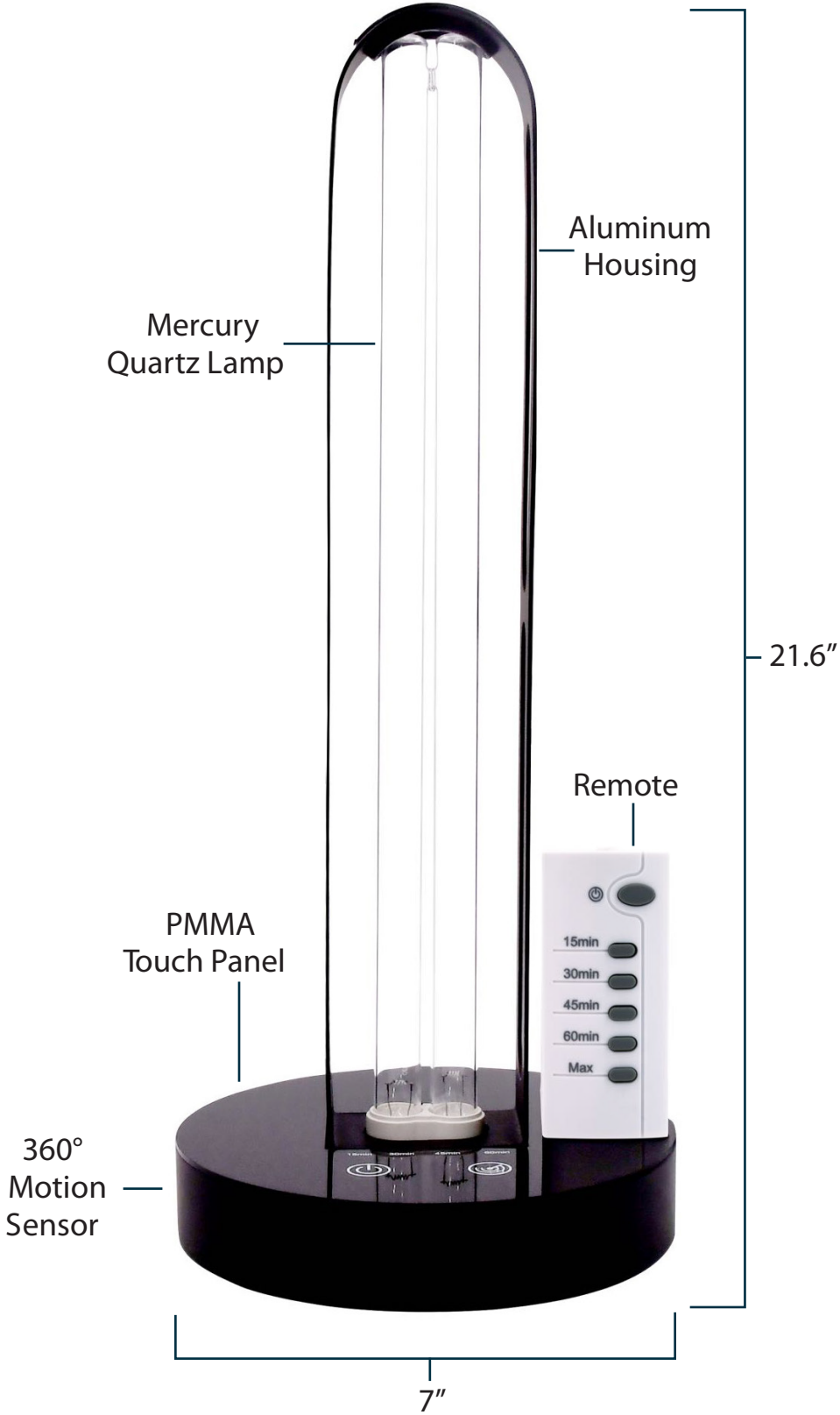
Disinfect in 15-60 min



The Centers for Disease Control and Prevention (CDC) recommends a UV lamp intensity of

40 $\mu\text{W}/\text{cm}^2$

Commercial UVC Sterilizer



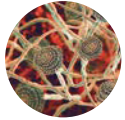
UVC Kills



Viruses



Bacteria



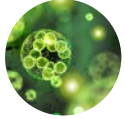
Fungi



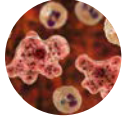
Mold



Yeast



Algae



Amoebas



Allergens

FEATURES

1. Clinically proven to eliminate 99.9% of all viruses, bacteria, fungi, mold, yeast, algae, amoebas, and other germs and allergens within seconds of 253.7 nm UVC exposure.
2. Can be programmed and set with touch panel or remote control.
3. A 360° motion sensor deactivates the lamp when it detects movement within 16 feet.
4. Contact-free disinfection reduces the chance of human error and cross-contamination.
5. Hypoallergenic sanitizing does not leave irritants or toxic chemicals behind.
6. Reduces the need to buy and handle corrosive cleaners. (Does not replace soap/water)

SPECIFICATIONS



Model:	Commercial UVC Sterilizer
Size:	21.6"(L) x 7"(W) x 7"(D)
Power:	55 W
Voltage:	AC90 - 100V
UV Strength:	$\geq 117 \mu\text{W} / \text{cm}^2$
UVC Wavelength:	253.7 nm
UVC Lamp:	Mercury Quartz
Bonus Features:	Motion Detector, Remote
Bulb Lifespan:	$\geq 8,000$ hours
Weight:	2.9 lbs
Certifications:	CE, RoHS (ETL, FCC Pending)

TIPS & SAFETY

- To maximize effectiveness, ensure the room to be disinfected is clear of debris
- Take care to avoid direct or prolonged exposure of UVC to skin and eyes
- Keep out of reach of children and pets, do not leave unattended while not in use
- Clear area of people, plants and animals
- Can be used near food, tests have not shown any loss in quality or nutrition
- Set on a small stand like a tripod
- If the lamp breaks use a wet paper towel to clean up, and do not inhale
- As distance from a subject is increased, exposure time should be prolonged

INSTRUCTIONS

Plug in the device and place it in the center of the room about 40" away from the ground. Make sure the area is clear and estimate the size of the room to determine cycle length.

Area	Disinfect Time
215 ft ²	15 minutes
320 ft ²	30 minutes
430 ft ²	45 minutes
550 ft ²	60 minutes

Manual Operation:

1. Plug in and power on.
2. Press ON/OFF button on touch panel.
3. Using the Time Setting button select your duration.
4. There is a 10 second delay, then the light activates.

Remote Operation:

1. Plug in and power on.
2. Press ON/OFF button on the remote control.
3. Select your duration using a Time Setting button.
4. There is a 10 second delay, then the light activates.

Motion Sensor: This activates 20 seconds after the lamp is switched on. When motion is detected the light will turn off, then turn back on after 20 seconds of no motion. To activate or deactivate the sensor, hold down a time setting button for 5 seconds.