



Mobile UVC Sterilizer Unit

Portable 253.7 nm Ultraviolet Disinfection
Kills Viruses, Bacteria, Fungi & More

Mobile UVC Sterilizer Unit



Disinfect in 5-120 min



The Centers for Disease Control and Prevention (CDC) recommends a UV lamp intensity of

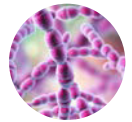
40 $\mu\text{W}/\text{cm}^2$

at the center of the work area to ensure surface decontamination.

Mobile UVC Sterilizer Unit



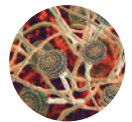
UVC Kills



Viruses



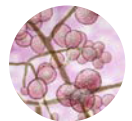
Bacteria



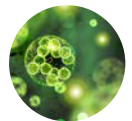
Fungi



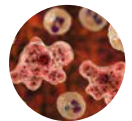
Mold



Yeast



Algae



Amoebas



Allergens

FEATURES

1. Clinically proven to eliminate 99.9% of all viruses, bacteria, fungi, mold, yeast, algae, amoebas, and other germs and allergens within seconds of 253.7 nm UVC exposure.
2. Can be programmed and set with panel or remote control.
3. A 360° motion sensor deactivates the lamp when it detects movement within 20 feet.
4. Arm can be folded out of protective shell and adjusted to 90°, 135°, and 180° angles.
5. Contact-free disinfection reduces the chance of human error and cross-contamination.
6. Reduces the need to buy and handle corrosive cleaners. (Does not replace soap/water)

SPECIFICATIONS



Model:	Mobile UVC Sterilizer Unit
Size:	41.7"(L) x 13.8"(W) x 14.2"(D)
Power:	60 W
Voltage:	AC110V
UV Strength:	≥214 μW/cm ²
UVC Wavelength:	253.7 nm
UVC Lamp:	Mercury Quartz
Bonus Features:	Motion Detector, Remote
Bulb Lifespan:	≥6,000 hours
Weight:	19.8 lbs
Certifications:	CE

TIPS & SAFETY

- To maximize effectiveness, ensure the room to be disinfected is clear of debris
- Take care to avoid direct or prolonged exposure of UVC to skin and eyes
- Keep out of reach of children and pets, do not leave unattended while not in use
- Clear area of people, plants and animals
- Can be used near food, tests have not shown any loss in quality or nutrition
- Angle the arm for maximum exposure
- If the lamp breaks use a wet paper towel to clean up, and do not inhale
- As distance from a subject is increased, exposure time should be prolonged

INSTRUCTIONS

Ensure that the base is attached, open the side door and lift the lamp arm to your desired angle. Then plug the cord into an outlet and ensure the area is clear of people and debris.

Base Model: Press the 'ON' button and set the timer between 0-120 minutes.

This model works well to disinfect vacant areas after hours with minimal staff on hand, and should be operated by a professional familiar with this device.

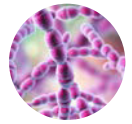
Sensor Model: Press the 'ON' button and set the timer between 0-1440 minutes.

This model is ideal for more populated areas and can easily be operated by a novice. There is a delay once it is turned on, so it will not activate until the sensor does not detect anyone. If a person or small animal enters the area it will deactivate the unit temporarily until they leave.

Mobile UVC Sterilizer Unit XL



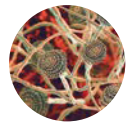
UVC Kills



Viruses



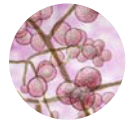
Bacteria



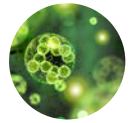
Fungi



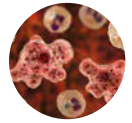
Mold



Yeast



Algae



Amoebas



Allergens

FEATURES

1. Clinically proven to eliminate 99.9% of all viruses, bacteria, fungi, mold, yeast, algae, amoebas, and other germs and allergens within seconds of 253.7 nm UVC exposure.
2. Can be programmed and timer set with panel or remote control.
3. A 360° motion sensor deactivates the lamp when it detects movement within 20 feet.
4. Two arms can be folded and adjusted to 30-180° angles. (Activate one or both arms)
5. Contact-free disinfection reduces the chance of human error and cross-contamination.
6. Reduces the need to buy and handle corrosive cleaners. (Does not replace soap/water)

SPECIFICATIONS



Model:	Mobile UVC Sterilizer Unit XL
Size:	46.9"(L) x 16.5"(W) x 15"(D)
Power:	120 W
Voltage:	AC110V
UV Strength:	≥428 μW/cm ²
UVC Wavelength:	253.7 nm
UVC Lamp:	Mercury Quartz
Bonus Features:	Motion Detector, Remote
Bulb Lifespan:	≥6,000 hours
Weight:	48.5 lbs
Certifications:	CE

TIPS & SAFETY

- To maximize effectiveness, ensure the room to be disinfected is clear of debris
- Take care to avoid direct or prolonged exposure of UVC to skin and eyes
- Keep out of reach of children and pets, do not leave unattended while not in use
- Clear area of people, plants and animals
- Can be used near food, tests have not shown any loss in quality or nutrition
- Angle the arms for maximum exposure
- If the lamp breaks use a wet paper towel to clean up, and do not inhale
- As distance from a subject is increased, exposure time should be prolonged

INSTRUCTIONS

Ensure that the base is attached, open the side doors and lift each lamp arm to your desired angle. Then plug the cord into an outlet and ensure the area is clear of people and debris.

Sensor Model: Press the 'ON' button and set the timer between 15-1440 minutes.

This model is ideal for more populated areas and can easily be operated by a novice. There is a delay once it is turned on, so it will not activate until the sensor does not detect anyone. If a person or small animal enters the area it will deactivate the unit temporarily until they leave. You can operate both arms at once or just one at a time with the "Lamp 1" and "Lamp 2" buttons.