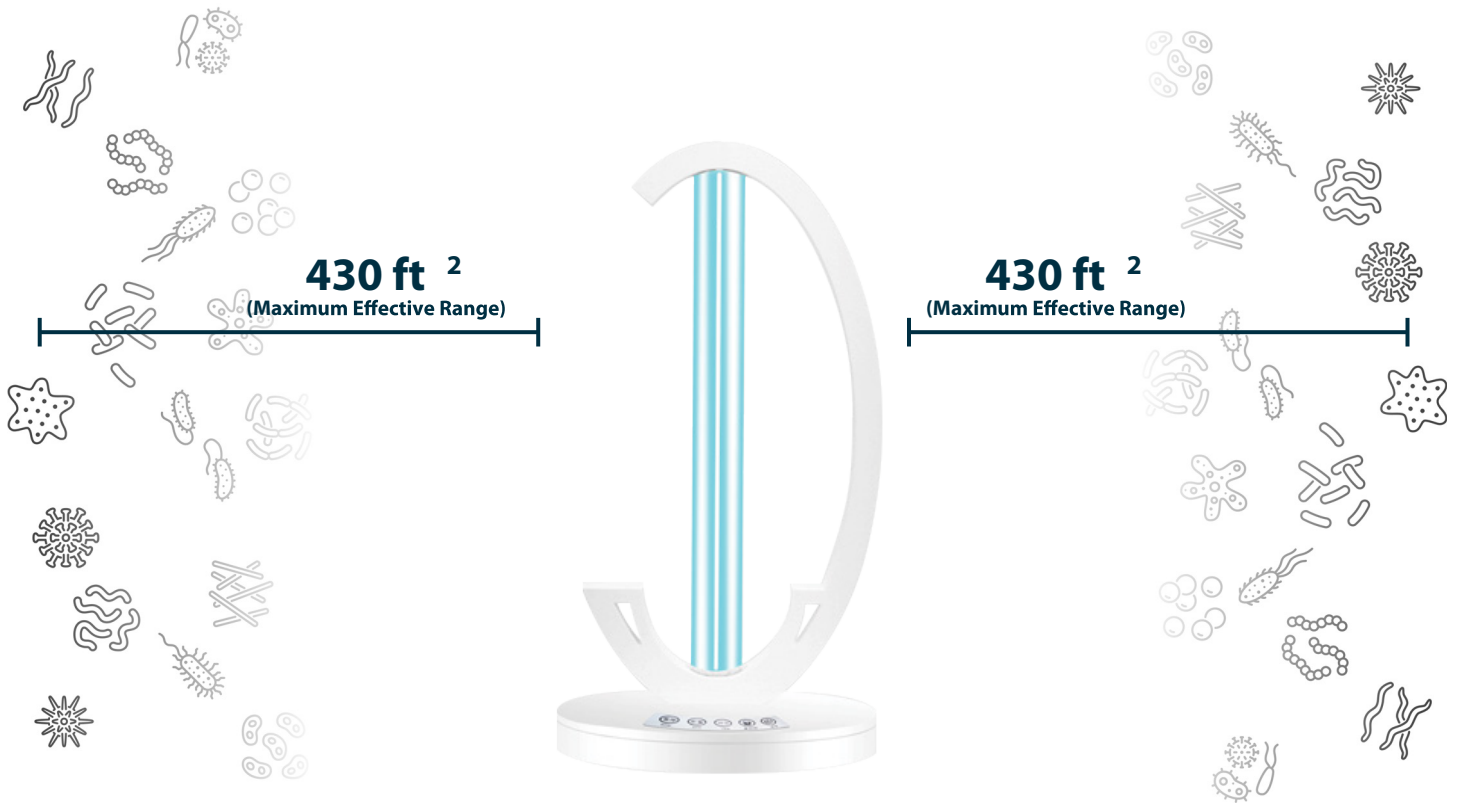




UVC Room Sterilizer

Portable 253.7 nm Ultraviolet Disinfection
Kills Viruses, Bacteria, Fungi & More

UVC Room Sterilizer



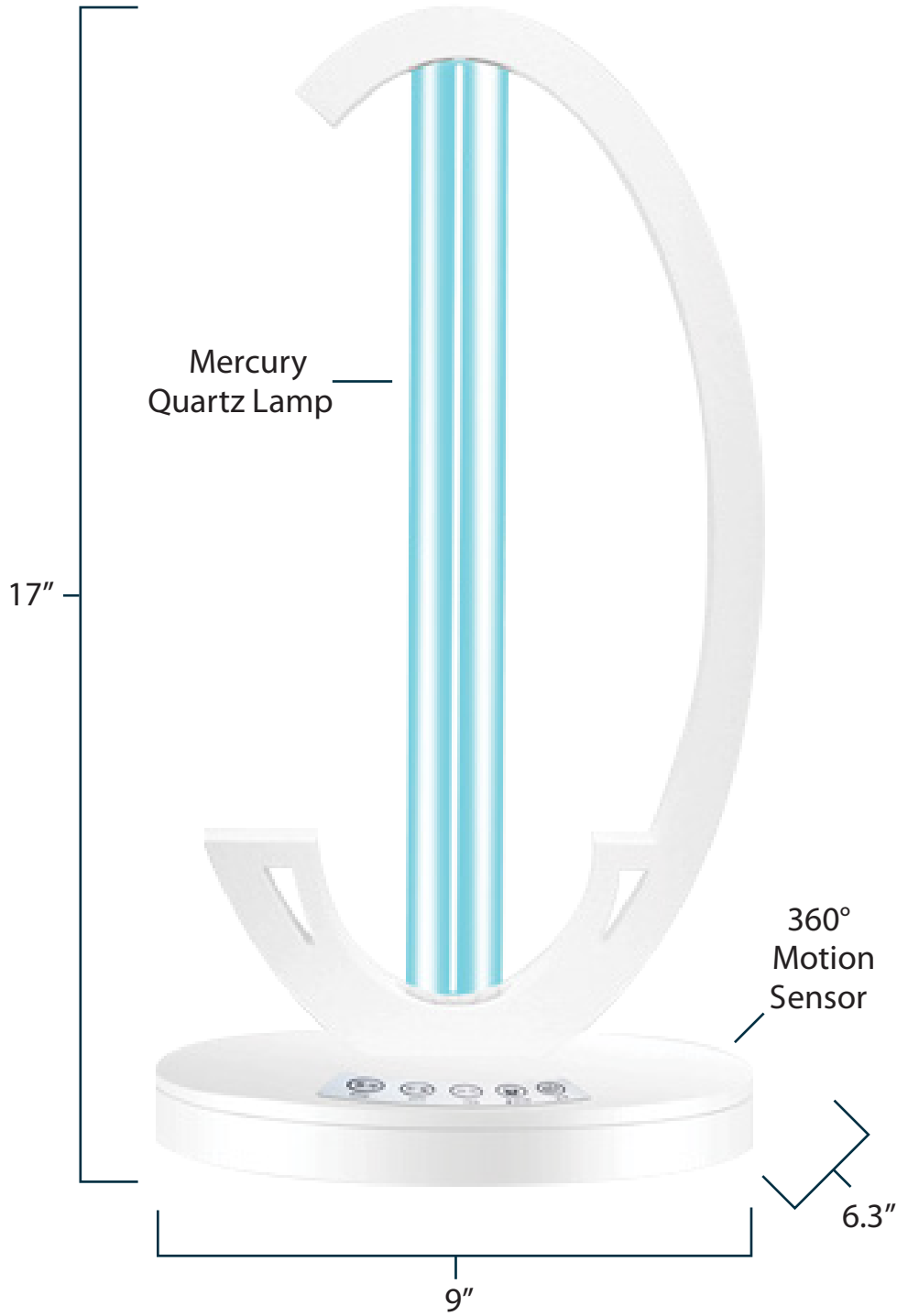
Disinfect in 15-60 min



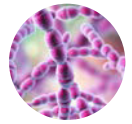
The Centers for Disease Control and Prevention (CDC) recommends a UV lamp intensity of

$40 \mu\text{W}/\text{cm}^2$

UVC Room Sterilizer



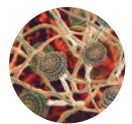
UVC Kills



Viruses



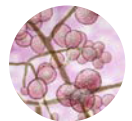
Bacteria



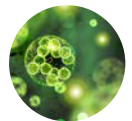
Fungi



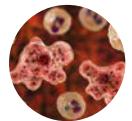
Mold



Yeast



Algae



Amoebas



Allergens

FEATURES

1. Clinically proven to eliminate 99.9% of all viruses, bacteria, fungi, mold, yeast, algae, amoebas, and other germs and allergens within seconds of 253.7 nm UVC exposure.
2. Can be programmed and set via button panel with child safety lock.
3. A 360° motion sensor deactivates the lamp when it detects movement within 12 feet.
4. Contact-free disinfection reduces the chance of human error and cross-contamination.
5. Hypoallergenic sanitizing does not leave irritants or toxic chemicals behind.
6. Reduces the need to buy and handle corrosive cleaners. (Does not replace soap/water)

SPECIFICATIONS

Model:	UVC Room Sterilizer
Size:	17"(L) x 9"(W) x 6.3"(D)
Power:	38 W
Voltage:	AC110 - 130V
UV Strength:	$\geq 143 \mu\text{W}/\text{cm}^2$
UVC Wavelength:	253.7 nm
UVC Lamp:	Mercury Quartz
Bonus Features:	Motion Detector, Child Lock
Bulb Lifespan:	$\geq 15,000$ hours
Housing Material:	ABS
Weight:	1.5 lbs

TIPS & SAFETY

- To maximize effectiveness, ensure the room to be disinfected is clear of debris
- Take care to avoid direct or prolonged exposure of UVC to skin and eyes
- Keep out of reach of children and pets, should be put away between uses
- Clear area of people, plants and animals
- Can be used near food, tests have not shown any loss in quality or nutrition
- Set on a small stand like a tripod
- If the lamp breaks use a wet paper towel to clean up, and do not inhale
- As distance from a subject is increased, exposure time should be prolonged

INSTRUCTIONS

Plug in the device and place it in the center of the room about 40" away from the ground. Make sure the area is clear and estimate the size of the room to determine cycle length.

Area	Disinfect Time
170 ft ²	15 minutes
280 ft ²	30 minutes
430 ft ²	60 minutes

Manual Operation:

1. Once device is plugged in hold the child safety lock for 3 sec.
2. Press the button to set your time: "15min" "30min" "60min".
3. The lamp beeps for 30 sec before it starts so you can exit.
4. Description in progress.

Motion Sensor: Description in progress.