

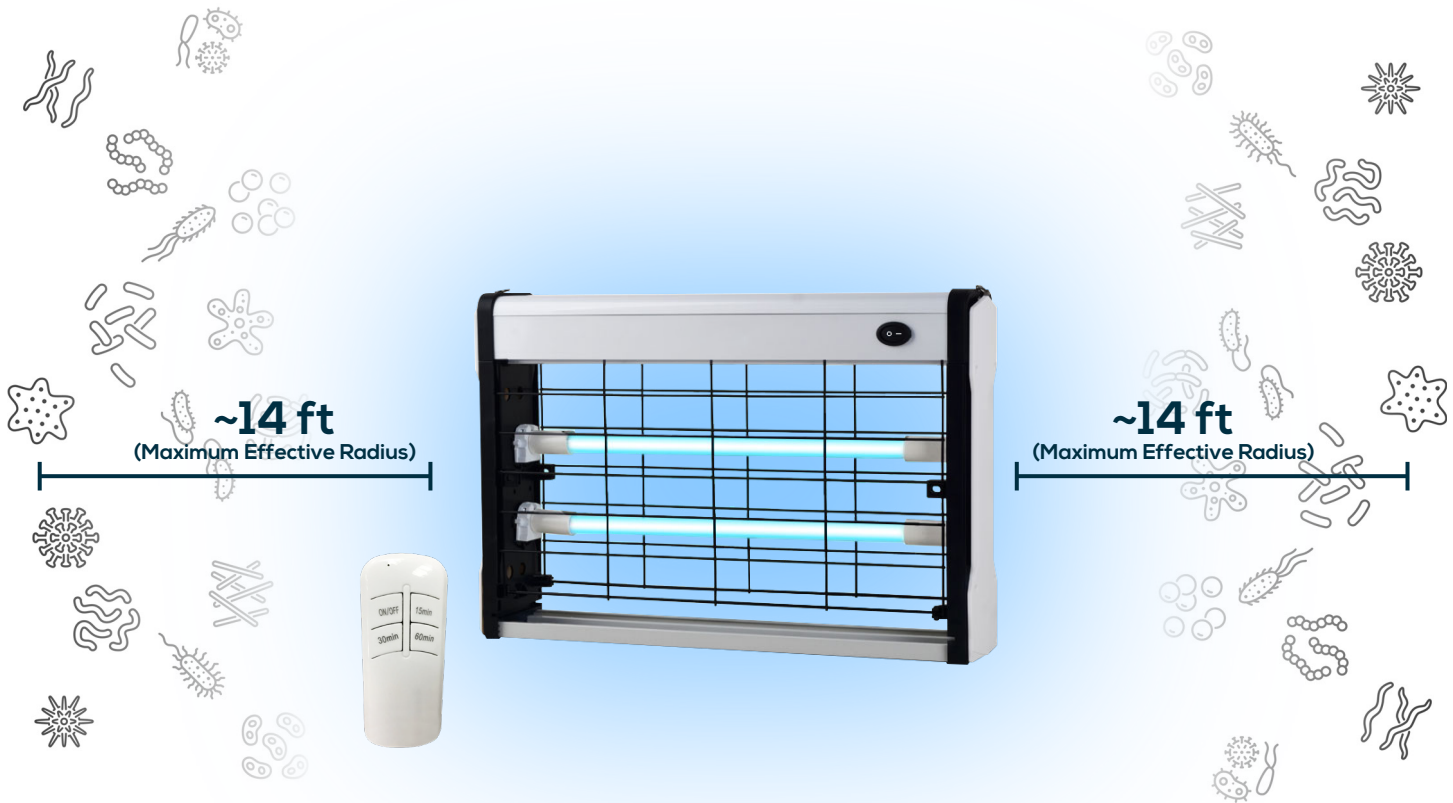
**EDGE**  
LED LIGHTING



## **Wall Mounted UVC Sterilizer**

Portable 253.7 nm Ultraviolet Disinfection  
Kills Viruses, Bacteria, Fungi & More

# Wall Mounted UVC Sterilizer



Disinfect in 15-60 min

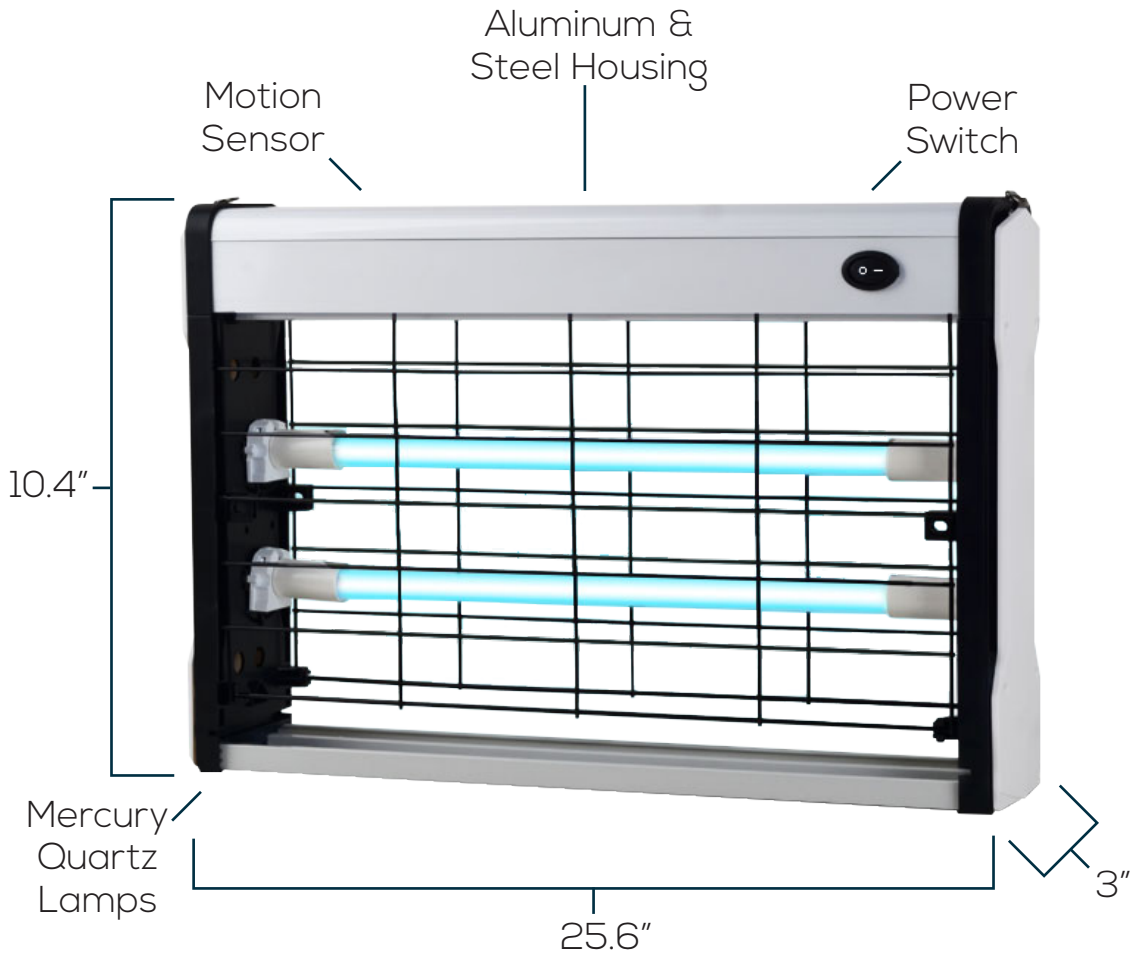


The Centers for Disease Control and Prevention (CDC) recommends a UV lamp intensity of

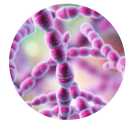
**40  $\mu\text{W}/\text{cm}^2$**



# Wall Mounted UVC Sterilizer



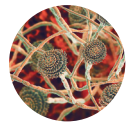
## UVC Kills



Viruses



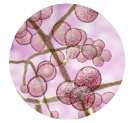
Bacteria



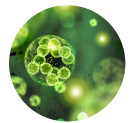
Fungi



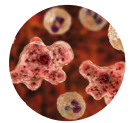
Mold



Yeast



Algae



Amoebas



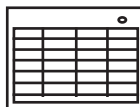
Allergens

## FEATURES

1. Clinically proven to eliminate 99.9% of all viruses, bacteria, fungi, mold, yeast, algae, amoebas, and other germs and allergens within seconds of 253.7 nm UVC exposure.
2. Can be programmed and set via remote control.
3. A motion sensor deactivates the lamp when it detects movement within 16 feet.
4. Contact-free disinfection reduces the chance of human error and cross-contamination.
5. Hypoallergenic sanitizing does not leave irritants or toxic chemicals behind.
6. Reduces the need to buy and handle corrosive cleaners. (Does not replace soap/water)

## SPECIFICATIONS (CE, RoHS Pending)

Model:	Wall Mounted UVC Sterilizer
Size:	25.6"(L) x 10.4"(W) x 3"(D) 4.3 lbs
Power:	40 W
Voltage:	AC110 - 130V
UV Strength:	$\geq 150 \mu\text{W}/\text{cm}^2$ (at 3.5 ft)
Effective Range:	~550 ft <sup>2</sup>
UVC Wavelength:	253.7 nm
UVC Lamp:	Mercury Quartz
Bonus Features:	Motion Detector, Remote
Bulb Lifespan:	$\geq 8,000$ hours
Remote Range:	32 ft



## TIPS & SAFETY

- To maximize effectiveness, ensure the room to be disinfected is clear of debris
- Take care to avoid direct or prolonged exposure of UVC to skin and eyes
- Extend disinfection time if your room temperature is above 104° F or below 68° F to ensure adequate exposure
- Clear area of people, plants and animals
- Can be used near food, tests have not shown any loss in quality or nutrition
- If the lamp breaks use a wet paper towel to clean up, and do not inhale
- As distance from a subject is increased, exposure time should be prolonged

## INSTRUCTIONS

Make sure the device is plugged into a grounded outlet. The fixture should be turned on with the power switch located on the front of the housing before being remote controlled.

Area	Disinfect Time
~225 ft <sup>2</sup>	15 minutes
~325 ft <sup>2</sup>	30 minutes
~550 ft <sup>2</sup>	60 minutes

### Remote Operation:

1. Press the "ON/OFF" button on the remote to get the fixture ready for activation.
2. Press the button for a "15min", "30min", or "60min" cycle.
3. Leave the area immediately.
4. When the cycle is complete the light shuts off automatically.

**Motion Sensor:** The sensor automatically stops the UV light cycle if motion is detected within 16 feet. To activate the fixture again simply start a new cycle and leave the area. It is best to run this device after business hours as the last person is leaving.